

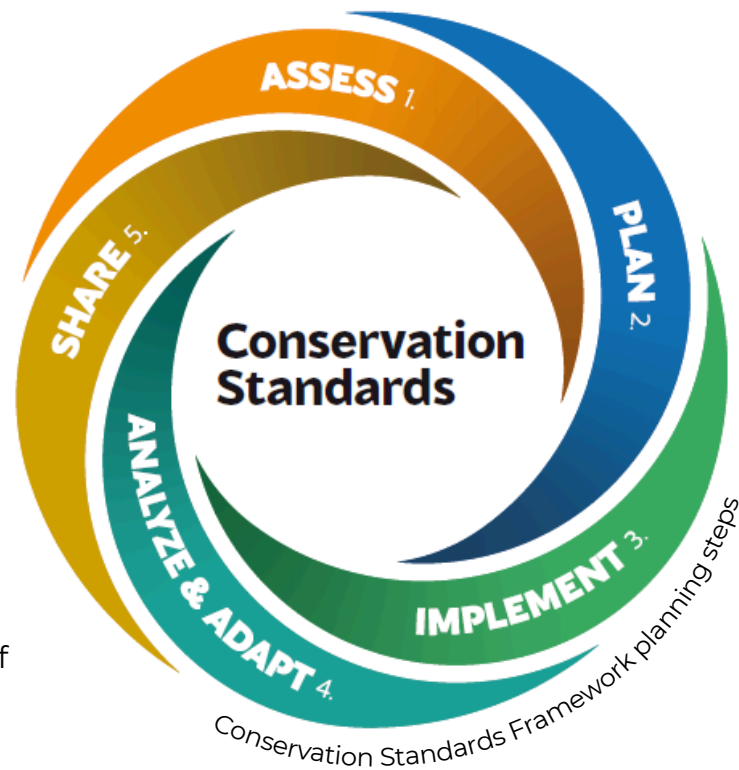
Southern Eastern Avalon Conservation Planning Initiative Summary

WHY HERE, WHY NOW?

The Government of Canada has pledged to protect 30% by 2030. In line with this commitment, the Southern and Eastern Avalon coastal and marine regions are being evaluated for designation as a marine National Wildlife Area. This area is a priority due to its significant ecological, cultural, and economic values.

The project team is utilizing a globally recognized, five-step method known as the Conservation Standards Framework. This adaptive management approach allows for flexible, transparent, and participatory conservation planning, ensuring strategies can be adjusted at any stage to meet ecological goals effectively.

Our intent is to maintain access and current efforts of small-scale fisheries and recreational hunting by safeguarding our ocean space.



WHO IS INVOLVED?

The planning team consists of Federal, Provincial, Indigenous Governments, non-profit organizations, and other interested parties. To ensure that participation includes local knowledge and perspectives, CWS and CPAWS-NL are hosting community sessions throughout the study area. If you are interested in more information, please feel free to contact us, or visit our webpage to stay up-to-date and to share your ideas.



CONTACT US!

[www.cpawsnl.org/
conservationstandards](http://www.cpawsnl.org/conservationstandards)

Mary Alliston Byrne

Marine Conservation Areas Coordinator
Environment and Climate Change Canada
Canadian Wildlife Service
maryalliston.byrne@ec.gc.ca

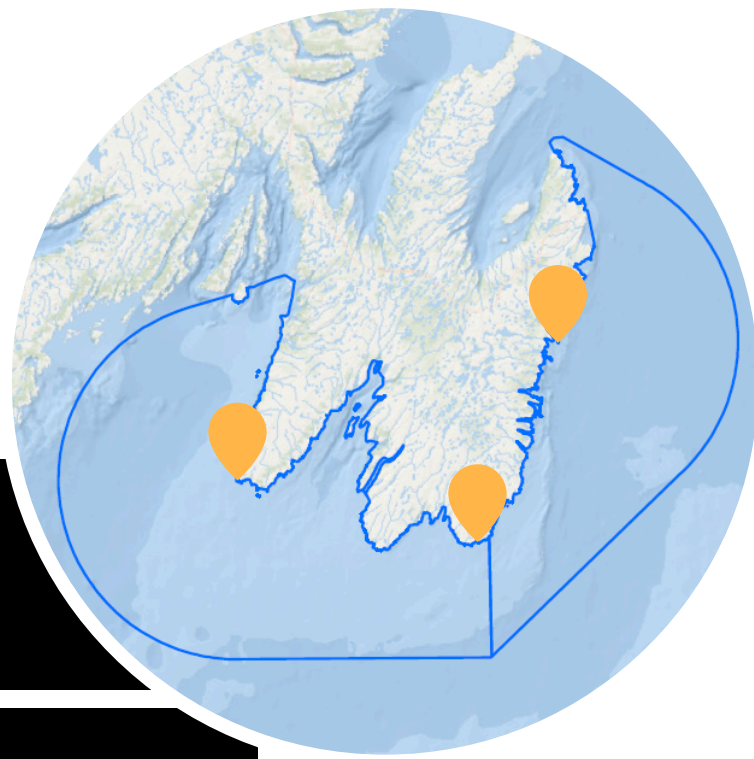
Sofia Karabatsos

Conservation Coordinator
Canadian Parks and Wilderness Society
Newfoundland and Labrador Chapter
skarabatsos@cpaws.org

WHERE ARE WE NOW?

This initiative is currently focused on Step 1 (Assess) and 2 (Plan), which includes development of a purpose and study area, identification of biodiversity targets, and development of indicators to best understand their health and the threats they face. The insights gained from these phases will guide the planning team in creating effective conservation strategies.

The study area is being considered for many different conservation strategies, including a marine National Wildlife Area



Southern and Eastern Avalon Conservation Planning Initiative Study Area highlighting key reference points (left to right): Cape St. Mary's, Mistaken Point, and Witless Bay Ecological Reserves

THE PURPOSE

To further conserve and celebrate coastal and marine biodiversity, and foster the long-term well-being of communities and livelihoods within the Southern and Eastern Avalon for the next seven generations.

WHAT DO WE CARE ABOUT?

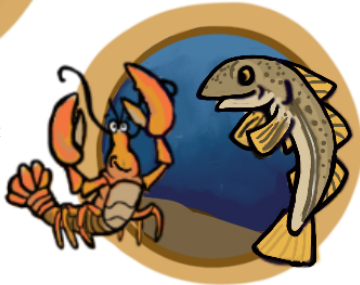
Five biodiversity targets have been identified to guide development of conservation strategies: Pelagic and Diadromous Fish, Eelgrass Ecosystems, Benthic Ecosystems, Whales & Sea Turtles, and Marine Migratory Birds. These targets encompass the coastal and marine species and habitats that reflect the area's ecological, social, and economic values.

Pelagic and Diadromous Fish



Eelgrass Ecosystems

Benthic Ecosystems



Whales and Sea Turtles



Marine Migratory Birds



CURRENT TARGET HEALTH

Important characteristics for each target have been defined and measured using relevant indicators to determine their current health. These are continuously being refined as new information becomes available.

CRITICAL THREATS

With the help of expert and local engagement, the planning team is identifying the most significant pressures affecting each biodiversity target.

NEXT STEPS

The planning team will identify strategies to effectively conserve targets in the study area, while continuing to incorporate community knowledge and perspectives through engagement sessions.



GET INVOLVED!

Help us shape what conservation can look like in Southern and Eastern Avalon. Contact us to learn more about how you can be part of the planning team!