



CANADIAN PARKS AND WILDERNESS SOCIETY
NEWFOUNDLAND AND LABRADOR CHAPTER

YOUR MONTHLY NEWSLETTER

JANUARY 2022 | MONTHLY NEWSLETTER

Happy 2022!

We hope that you have had a great start to the year!

This year is going to be a busy one! We already have a ton of projects on the go - and we would love to hear from you about them!

Learn more about them and how you can help below! 🌟



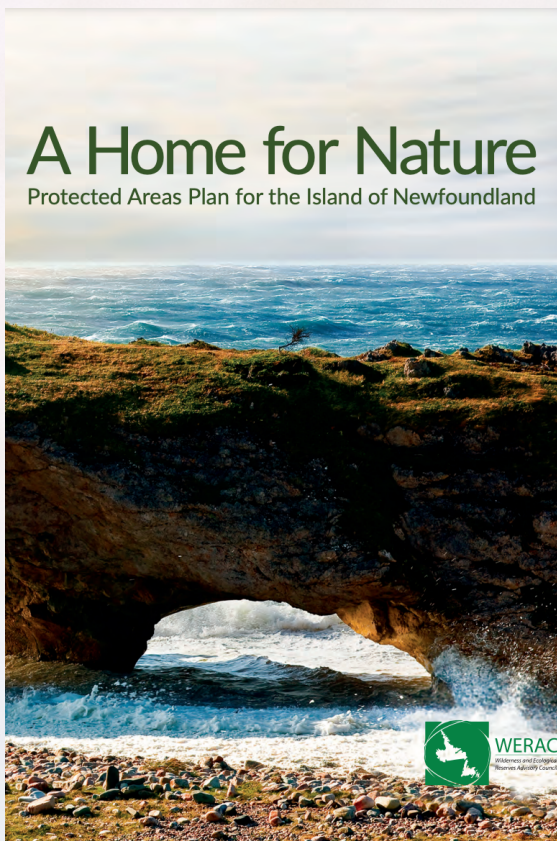
Photo Credit: Chris Babcock, Getty Images

Do you have any great stories about experiences in nature, environmental events or other environmental topics that you would like to see published on our online blog or newsletter? Pitch your ideas to us at csimmons@cpaws.org!

Message from the President

Happy 2022, CPAWS supporters!

Another year has quickly passed, and while the doldrums and hardships of the pandemic are still experienced and shared by all alike, at least one positive thing we can all look to is the world is still turning and we can still get outside and enjoy what nature has to offer. Throughout it all and despite the unavoidable operational challenges, the staff at CPAWS-NL has been working hard to ensure that our natural outdoor terrestrial and marine spaces are responsibly managed and protected sustainably, especially for our future generations.



In particular, CPAWS-NL has been focusing on the goal of increasing protected areas in the province, and have been steadily working on effective land and sea based conservation initiatives, which includes provincial initiatives, indigenous led conservation initiatives, and consultations with Parks Canada on National Parks. Additionally, in May 2021, the Wilderness and Ecological Reserves Advisory Council (WERAC) released a follow-up document to the long awaited Protected Areas Plan (released in 2020) that summarized all of the public feedback collected in response to the Plan, which you can read [**here**](#).

CPAWS-NL has continued to work with these documents and feedback in promoting the importance of protected areas, and continue to offer encouragement and support for the implementation of the Protected Areas Plan, which will result in a significant strengthening of the province's network of terrestrial protected areas and corridors. It is important to keep in mind that Newfoundland and Labrador is the last jurisdiction in the country to not yet benefit from a strong and dedicated plan for our important natural areas.

2021 has also been a year of noteworthy highlights. The Puffin and Petrel Patrol had a strong season with over 800 participants and thousands of misguided seabirds (340 pufflings and over 3000 petrels) safely released back to the sea after being stranded on land by following bright lights at night.



The Ship to Shore Program was successful in engaging with coastal communities along the Connaigre Peninsula and performing harbour assessments to aid in the management of marine waste. Informative guides were been produced for the identification of vulnerable marine species such as various species of whales, turtles, and wolffish, as well as guidance on safe boating practices for the tourism industry.

Finally, CPAWS-NL held ten virtual workshops designed for outreach with new and current stakeholders to collect data for the interactive special marine areas maps currently under development. An online data hub and GIS platform is set to be released in 2022!



The busy staff at CPAWS-NL have also been participating in various educational outreach opportunities such as the well organized Oceans Day events, a fantastic nature photo contest, many virtual presentations, and even beach clean ups. And last but certainly not least, CPAWS-NL has become a member of the planning committee for the 5th International Marine Protected Areas Congress being held in Vancouver in September, 2022, so lots more to come on that throughout the new year!

With all the great work that CPAWS-NL has done this past year and going forward into the new year, we can be rest assured that our continued dedication to protecting biodiversity and wild terrestrial and marine spaces is continuing to have a positive impact! I would like to take this time now to thank our tireless volunteers and supporters of conservation and of course to applaud the professional experience our wonderful Chapter staff bring towards achieving the goals of the organization.

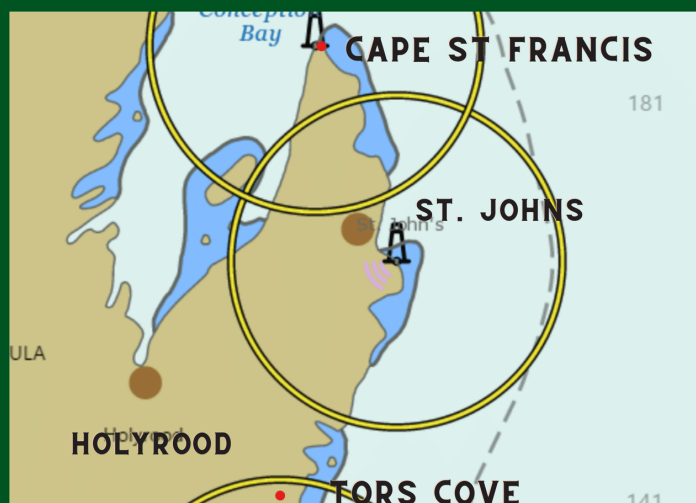
Here's to another great year of high points and achievements for nature in 2022!

Dan Ficken – CPAWS-NL President

WE ARE LOOKING TO HEAR FROM YOU!

PLEASE CONSIDER ASSISTING CPAWS-NL IN UPDATING DFO NL'S **COMMUNITY-BASED COASTAL RESOURCE INVENTORY (CCRI)**

If you or someone within your organization has fishing connections to the area of **TORS COVE TO CAPE ST FRANCIS** we would love to interview you!



- Canadian Parks and Wilderness Society NL in partnership with DFO NL Region are updating their Community-Based Coastal Resource Inventory (CCRI).
- We are looking to casually discuss marine-based experiences and observations with anyone located in communities between Tors Cove and Cape St. Francis willing to share.

The goal of these CCRI projects is to collect as much information as possible on local, traditional fishing areas and species. Data on groundfish, pelagics, shellfish, marine mammals, birds, aquatic plants, infrastructure and culture-tourism-recreation, etc. are considered relevant.

Interviewees are to be located within Tors Cove to Cape St. Francis, but they may fish or have marine experiences to share from outside this zone, such as Trepassey, etc. The information contributed will update and supplement the original CCRI data from 2007 and it will allow the observation of any potential changes in resources over time. This will aid in decision support for future marine developments and policies (marine spatial planning).

**INTERVIEWS ARE TO BEGIN
EARLY 2022, PLEASE
RESPOND ASAP**

THANK YOU!

For more details or to arrange an interview please contact:

KATIE POWER

Conservation Outreach Assistant CPAWS-NL

kpowers@cpaws.org

709-330-0531

LET US KNOW YOUR OPINION FOR A CHANCE TO WIN!

CPAWS NL WANTS THE PUBLIC'S OPINIONS AND
RECOMMENDATIONS ON COASTAL CONSERVATION
IN THE CAPE ST. MARY'S AND PLACENTIA BAY
REGION!

EARLY BIRD PRIZE DEADLINE - FEBRUARY 15, 2022
FINAL DEADLINE - FEBRUARY 28, 2022

\$500 in prizes to be won!

**TO LEARN MORE AND COMPLETE THE
SURVEY SCAN THE QR CODE OR VISIT**

**[CPAWSNL.ORG/COASTAL-
CONSERVATION](https://cpawsnl.org/coastal-conservation)**





HELP PROTECT NEWFOUNDLAND AND LABRADOR'S WILDSPACES!



Please consider donating and support our on-going efforts

YES, I support the NL Chapter of CPAWS

Please fill out the form below and mail to CPAWS-NL

Here is my donation of:

\$20 \$50 \$100 \$500 \$_____

I have enclosed a check (payable to CPAWS)
(Please indicate in memo to support work in NL Region)

I prefer to pay by VISA / MC / AMEX

Credit Card Number: _____

Expiry Date: _____

Signature: _____

Name: _____

Address: _____

City: _____ Postal Code: _____

Phone: _____

Email: _____

You can help even more by making a monthly donation!

\$5 Monthly \$10 Monthly \$20 Monthly

\$_____ Monthly

Please deduct this amount from my checking account at the first of each month. I am enclosing a VOID check.

I authorize CPAWS to debit my credit card for the amount noted to the left of this form.

You can change or cancel your monthly gifts at any time by calling 1-800-333-9453 or by email at wpc@cpaws.org. For further information about your rights to cancel a PAD agreement, as well as recourse rights visit your financial institution or the website www.cdnpay.ca. Tax receipts for monthly donations will be issued annually.

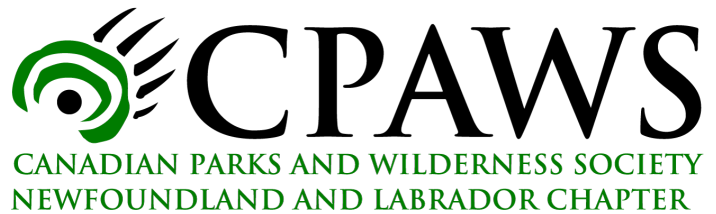
Your donation is fully tax-creditable. Receipts are issued for gifts of \$20 or more automatically, others on request.



DO YOU HAVE SUGGESTIONS, COMMENTS OR CONTRIBUTIONS?

We are always looking for inspiring stories, photos and ideas to help us engage Canadians in nature conservation. Do you have any great stories about your experiences in nature? Pitch your ideas and content to us at

csimmons@cpaws.org



360 Topsail Road,
Suite 303
St. Johns, NL
A1E 2B6
709-726-5800
NLinfo@cpaws.org
www.cpawsnl.org

See you next time!